

**FS3QX**  
**Slim Line Ducted Fan Coil With Plenum**  
**Sizes 018 thru 060**



# Product Data

## SLIM LINE DUCTED FAN COIL WITH PLENUM



A12514

### Installation Ease

- Factory installed 24 volt transformer and relay
- High and low voltage terminal strips
- Factory installed refrigerant expansion device
- Integral mounting brackets
- PP models have pre-wired remote key pad control as standard

### Service

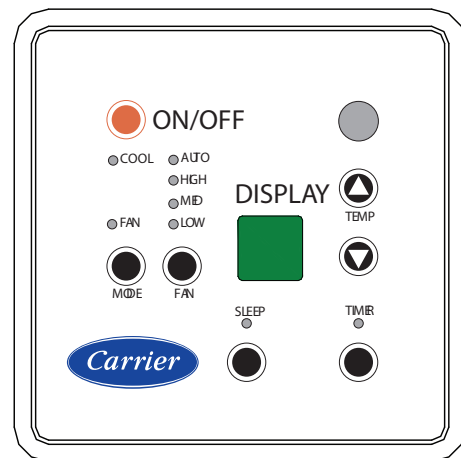
- Controls conveniently mounted in exterior panel

### Comfort

- Three speed blower motors
- PP models allow homeowner to select fan speed
- Low sound levels

### Quality

- Designed in accordance with EIN standards
- All models have galvanized steel cabinets
- High density closed cell foam insulation
- PP models feature electrostatically applied paint



A12516

# STANDARD FEATURES

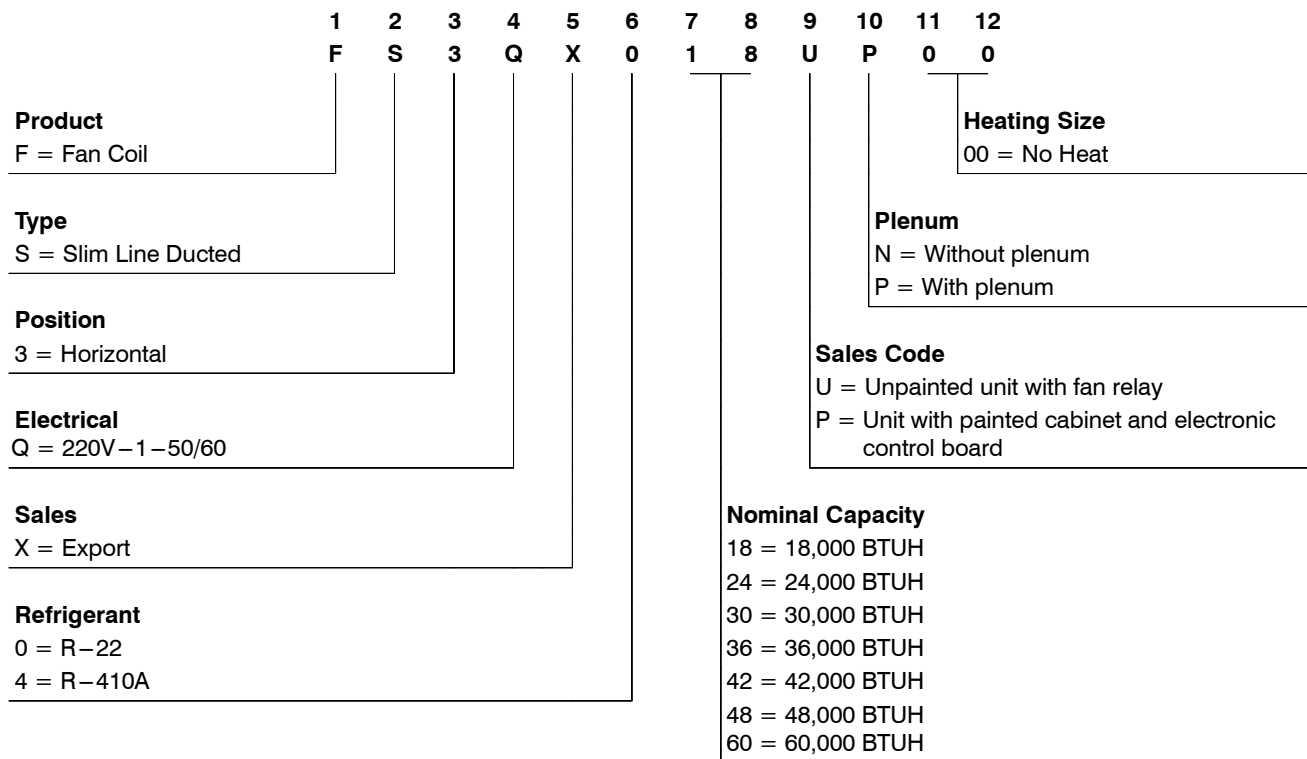
## FS3QX\*\*\*UP & FS3QX\*\*\*PP

- Ducted fan coil
- Seven models
- Nominal capacity - 18,000 - 60,000
- Voltage - 220-1-50/60
- Voltage range - 180 - 264
- R-22 refrigerant and R-410A
- Integral expansion orifice
- AC/HP capable unit
- Return air plenum
- Washable return air filter - aluminum
- Plastic blower wheel
- High/Low volt terminal strip
- 24V transformer
- Three fan speeds
- Integral mounting brackets

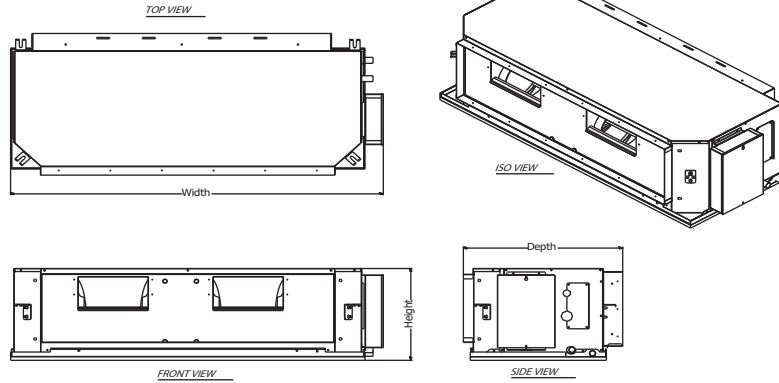
## FS3QX\*\*\*PP

- Auto restart
- Three minute auto restart time delay
- 150Vac Low voltage lockout
- Sleep function
- Room temperature display (on wired remote pad)
- PPJ standard white paint color

## MODEL NUMBER NOMENCLATURE

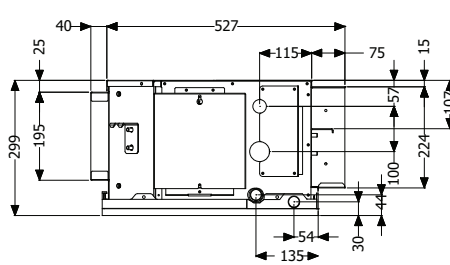


# DIMENSIONS

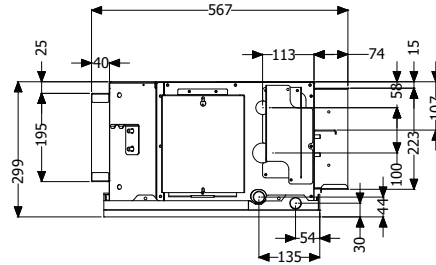


<i>model</i>	<i>Width</i>	<i>height</i>	<i>depth</i>
18	899	300	564
24	1026	300	564
30	1152	300	564
36-42	1152	350	614
48	1152	400	614
60	1444	400	614

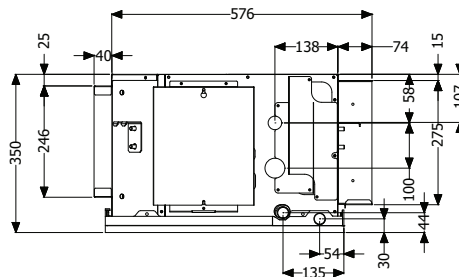
A12517



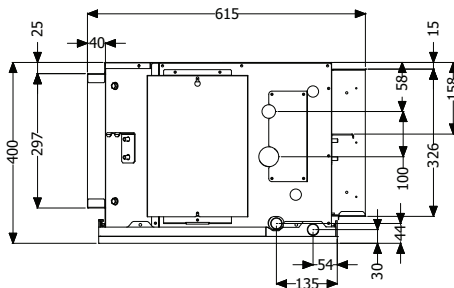
Unit Sizes 018 and 024



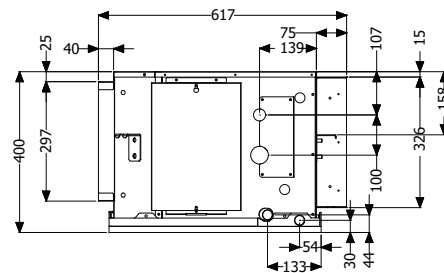
Unit Size 030



Unit Sizes 036 - 042



Unit Size 048



Unit Size 060

**Fig. 1 - Expanded Side View with Piping and Drain Connections**

A13177